

WEISS INSTRUMENTS

our experience...
...your solution



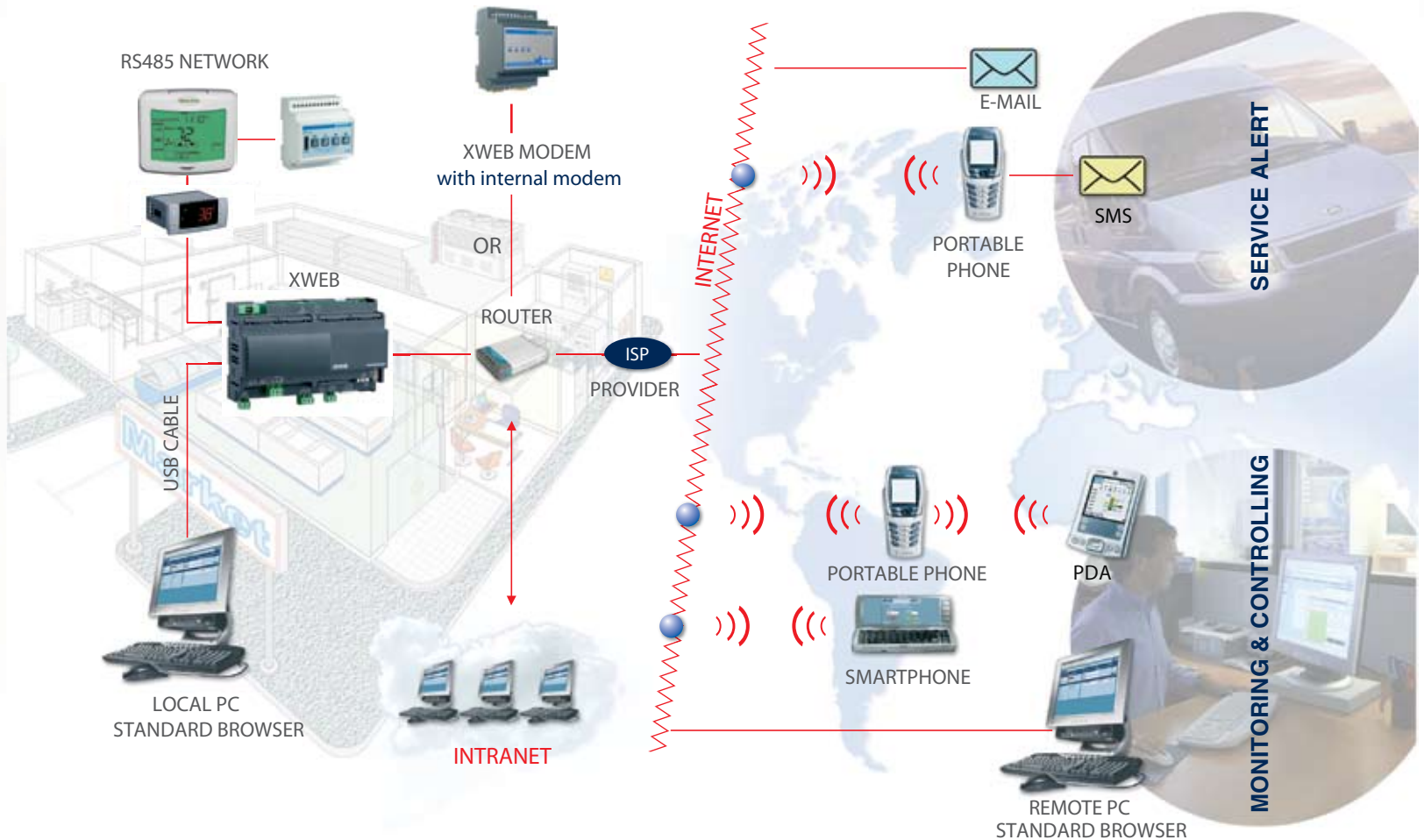
Controlling and Monitoring Gateway



dixell



Intranet/internet connection linking capabilities





D: 10 DIN Rail

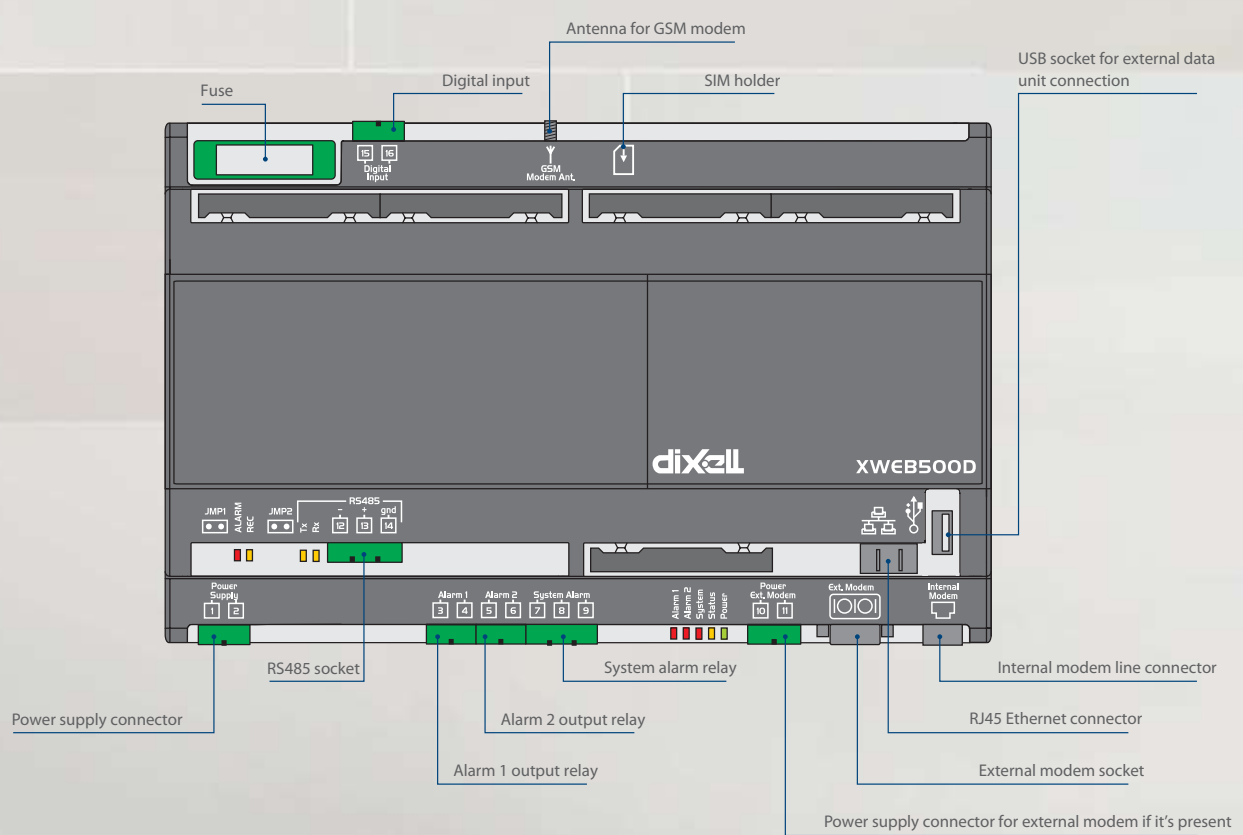


XWEB300/500D : ALARM AND CONTROLLING WEB SERVER

TECHNICAL DATA

- 200MHz CPU
- Internal memory up to 120MB
- 24Vac or 110÷230Vac ±10% power supply
- 1 LAN RJ45 connector ethernet/internet
- 1 RS485 serial line for device (ModBUS – RTU) connection
- 1 USB output (500)

- 1 RS232 port for external modem
- Up to 3 configurable relays (500)
- Programmable sampling time from 1 to 60 minutes
- Optional analogue or GSM internal modem
- Direct power supply for GSM modem
- Optional internal modem
- 1 - Digital input (500)





INTERNET BASED MONITOR AND CONTROL

Applications include:

- C-Stores
- Supermarkets
- Food Warehouses
- Institutional Food Service
- Restaurants
- Food Process

The XWEB is an economical, scalable solution that allows you to monitor, analyze, control and alarm your refrigeration, HVAC and lighting equipment from any PC over the internet to optimize energy, performance and operational savings. The system is easy to install and start up, and can be wired or wireless. You can start small and grow with your needs. The XWEB will provide HACCP documentation, energy savings and improved performance for all kinds of installations.

If you operate a C-Store, Supermarket, Food Warehouse, Institutional Food Service, Restaurant or Food Process Facility, the XWEB system is your total Control and Monitoring solution.

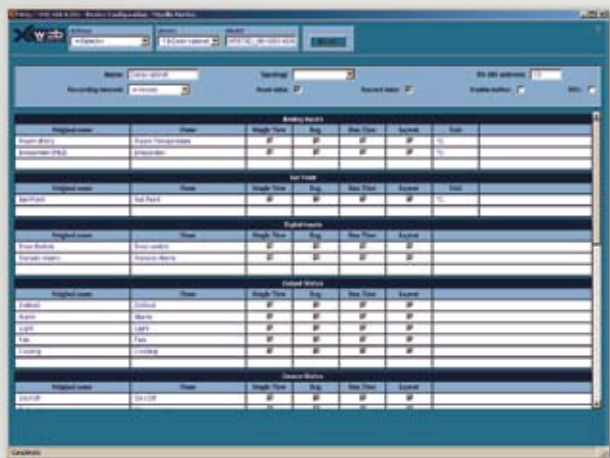


CONNECTION VIA SMART PHONE

Using a web-enabled PDA or Smart-Phone, you can connect to the XWEB and view several special web pages. You can then view all the probe values, output status and alarms. From your remote PDA or Smart Phone you can send commands such as changing Set-points, Start Defrost, Cancel Alarms, etc.

SMS, FAX, Email SENDING

A clear and concise alarm signalling to a service center, maintenance personal or facility owner is one of the most popular features of the XWEB. Alarms can be sent via Fax, e-mail, SMS and also by means of 2 local relays. Several recipients can receive alarms simultaneously so you can react quickly to any given alarm condition.

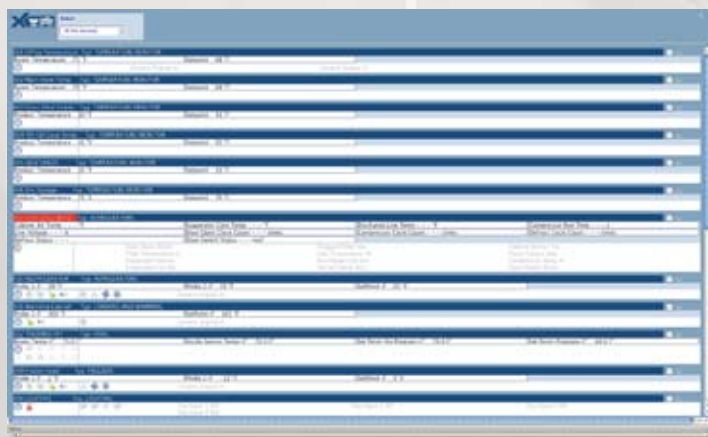


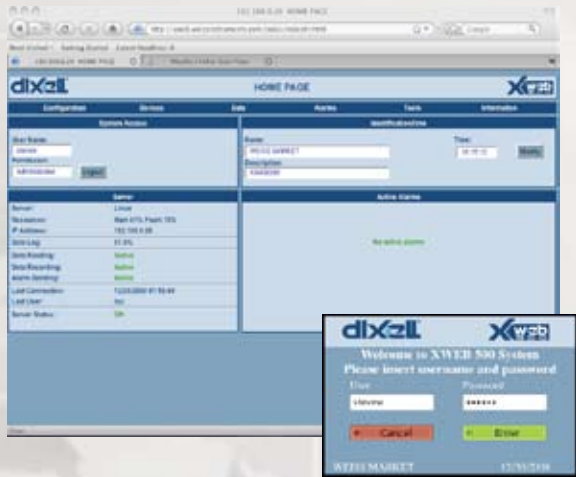
DEVICE CONFIGURATION & ALARM MANAGEMENT

With the XWEB, the user is free to create a set of options and rules that can range from the configuration of a simple system to the association of special options for any device connected and flexible rules for alarms. You can manage all alarms, delays and who receives them.

REAL TIME DEVICE OVERVIEW

The Run Time function displays many devices together in a unique window. This is dynamic page and the data displayed is updated in real time. The status of the devices connected (also from different manufacturers) is displayed simply and clearly with comprehensive information from the instrument being displayed. Thanks to the XWEB, the user has an intuitive, powerful and at the same time, very versatile device, that allows you to modify the various function parameters of the instruments, from any PC, anywhere.



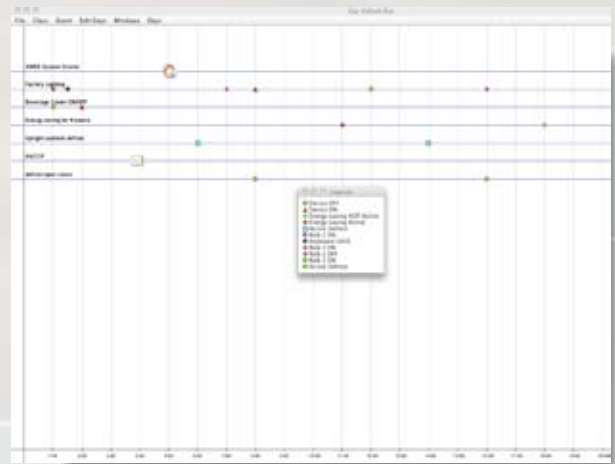


HOME PAGE AND SECURITY

Up to 20 users can log-on to the XWEB and the administrator can set various levels of access. The Home Page features easy to navigate drop down menus for: Configuration, Devices, Data, Alarms, Tools and Information. You can also see information at a glance on the server, check status and see if there are any active alarms.

SCHEDULER

The XWEB500* scheduler is a powerful graphic tool to manage commands sent to the controllers. You can quickly see an overview of all daily activity. This means that energy saving routines, including turning lights on and off and defrosts can be easily scheduled.



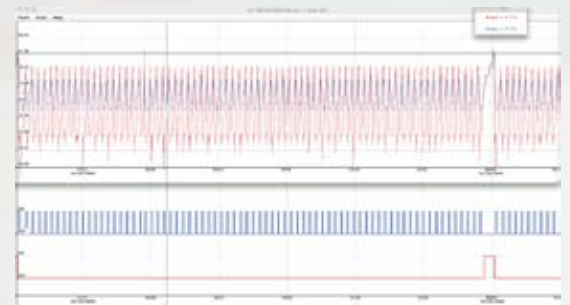
LAYOUT & GLOBAL COMMANDS

A powerful graphic editor that doesn't require the installation of any additional software on your PC, makes XWEB500* layout an ideal solution. Just upload the installation layout in JPEG (or other formats) and place the controls within the layout for a great snapshot view. Using this function the user can access all the real time data of the controllers and even send a command to a controller. Global Commands option let you send multiple commands to one or more controllers at the same time.

* The scheduler and layout available only on XWEB500.

GRAPHICS

XWEB can supply powerful graphs, able to represent multiple analogue variables on the same graph as the status of the outputs and alarms. This allows the user to have a precise snapshot view of important variables, for easy diagnosis of faults, and optimization of performance. For HACCP reports, the data can be uploaded to an .xls spreadsheet.





INTERNET MONITOR AND CONTROL SYSTEM COMPONENTS

MONITORING GATEWAYS / INTERNET BASED

XWEB300D - 6 or 18 WEB SERVER for monitoring and controlling Din Rail
MONITORING AND CONTROLLING WEB SERVER 6 or 18 ADDRESSES

XWEB500D - 36 or 100 WEB SERVER for monitoring, controlling and scheduling Din Rail
MONITORING AND CONTROLLING WEB SERVER 100 ADDRESSES

XWEBDINBOX1 wall mnt. enclosure will accommodate 1 XWEB
XWEBDINBOX2 wall mnt. enclosure will accommodate 1 XWEB 3 XJP

iCOOL[®] - RADIO-FREQUENCY WIRELESS COMMUNICATION MODULES

RF 900 Mhz. 1 Watt / indoor range 1500 ft. Outdoor 6 miles includes antenna
iCool900 Radio-frequency communication modules sender or receiver

PROBE I/O MONITORING MODULES FOR TEMPERATURE, PRESSURE, %RH

Hot Key - RS485 output - Remote display /keyboard output - 6 x serial address

Model	Digital inputs	Analog inputs	Power Supply
XJP60D	3 x power supply voltage	6 x NTC/PTC/PSI/%RH	24Vac

LIGHTING MODULE 4 ZONES

Hot Key - RS485 output - 4 Digital inputs/ 4 x8A output - 1 serial address

Model	Digital inputs	Digital Outputs	Power Supply
XJR40D	4 x Digital Inputs	4 x 8A	120Vac

XJBOX wall mnt. enclosure will accommodate 1-2 XJ din rail modules

POWER MONITOR

3 LED display Power/Watts/Amps / Volts /Kw/Hr (requires outboard CT's P.U.A) ModBus / RS-485

Model	Phase	Relay outputs	Power Supply
WM14	Single / Three to 660Vac	1 alarm	230Vac

TEMPERATURE PROBES

18NB-NTC-1.5M -40 / 230°F 5FT (Can be extended to 300FT using standard thermostat wire)

CONTROLLERS FOR Medium Temp - Low Temp Refrigeration

Display: 3 digit + icons - Hot Key - IP65 - Compressor safety - Keypad lock - defrost - TTL Serial Communicates to XWeb

Model	Probe inputs	Relay outputs	Digital input	Power Supply
XR30CX	2 x NTC/PTC	comp 16A, light 8A	1 x configurable	110, 230Vac
MEDIUM TEMP +ALARM + BUZZER				
XR70CX	3 x NTC/PTC	comp 16A, def 8A, fans 5A,		110, 230Vac
		light/alarm 8A	1 x configurable	
LOW TEMP				

CONTROLLER FOR ANTI-SWEAT MANAGEMENT

Model	Probe inputs	Relay outputs	Digital input	Power Supply
XH50P	NTC 4÷20mA	Alarm 8A 0 / 10V out	1 x configurable	24Vac

1 STAGE DIGITAL CONTROLLERS - FOR HEAT/COOL

Display: 3 1/2 digit with D.P. - Hot Key - IP65 - Keypad lock - Load safety - TTL Serial output 32x74mm
Temperature/humidity/pressure controllers

Model	Probe inputs	Relay outputs	Digital input	Power Supply
XT110C	NTC/PTC Pt100/TcK/TcJ/TcS	load 8A	1 x conf.	110, 230Vac

HVAC THERMOSTAT *iStat/Pro*

LCD Display backlit - 2 stage heat / Cool, HeatPump, Manual or Programmable. Remote sensor option 24V, ModBus

Model	Probe inputs	Relay outputs	Digital input	Power Supply
iStat/Pro	1 - 4	5	1	24V

XWEB-6/09

Many additional Controls and Options available, consult Factory