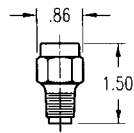
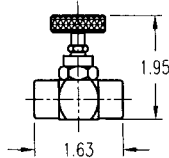


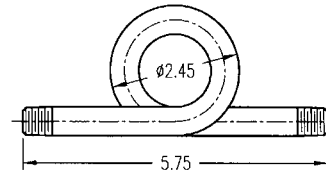
PSN-B-50



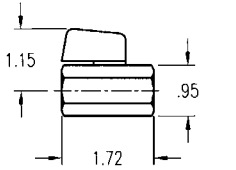
PSN-B-25



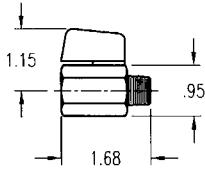
**25NVBR
25NVSS**



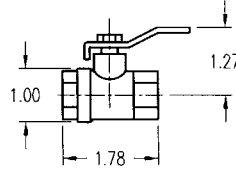
**SY-14B
SY-14S**



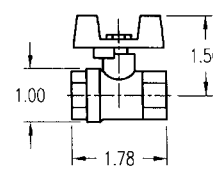
**BV25
BV50**



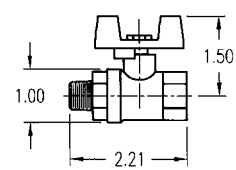
MBV25



LC-14



**TC-14
TC-12**



MTC-14

| Quantity | PRESSURE SNUBBERS | | | |
|----------|--------------------------|-----------------------|---------------------|------------------|
| | CAT. NO. | SIZE | MATERIAL | RATING |
| | PSN-B-25 | 1/4" MNPT x 1/4" FNPT | Brass | 1,500psi & 70°F |
| | PSN-B-50 | 1/2" MNPT x 1/2" FNPT | Brass | 1,500psi & 70°F |
| | NEEDLE VALVE | | | |
| | CAT. NO. | SIZE | MATERIAL | RATING |
| | 25NVBR | 1/4" FNPT x 1/4" FNPT | Brass | 600 psi & 300°F |
| | 25NVSS | 1/4" FNPT x 1/4" FNPT | 304 SS | 7000 psi & 550°F |
| | SYPHONS | | | |
| | CAT. NO. | SIZE | MATERIAL | RATING |
| | SY-14S | 1/4" MNPT x 1/4" MNPT | Iron | 500 psi & 400°F |
| | SY-14B | 1/4" MNPT x 1/4" MNPT | Brass | 250 psi & 400°F |
| | GAUGE COCKS | | | |
| | CAT. NO. | SIZE | MATERIAL | RATING |
| | TC-14 | 1/4" FNPT x 1/4" FNPT | Brass | 150 lb. Steam |
| | LC-14 | 1/4" FNPT x 1/4" FNPT | Brass | 150 lb. Steam |
| | MTC-14 | 1/4" FNPT x 1/4" MNPT | Brass | 150 lb. Steam |
| | TC-12 | 1/2" FNPT x 1/2" FNPT | Brass | 150 lb. Steam |
| | BALL VALVES | | | |
| | CAT. NO. | SIZE | MATERIAL | RATING |
| | BV25 | 1/4" FNPT x 1/4" FNPT | Nickel Plated Brass | 450 psi & 250°F |
| | MBV25 | 1/4" FNPT x 1/4" MNPT | Nickel Plated Brass | 450 psi & 250°F |
| | BV50 | 1/2" FNPT x 1/2" FNPT | Nickel Plated Brass | 450 psi & 250°F |

CUSTOMER _____
 PROJECT _____
 ENGINEER _____
 PRO or P.O. NO. _____

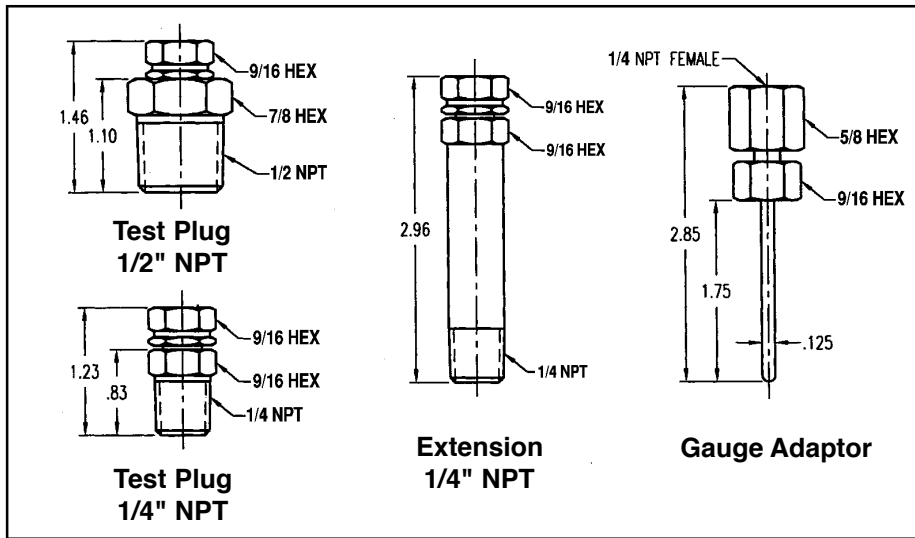


WEISS INSTRUMENTS, INC.
 HOLTSVILLE, NEW YORK 11742

DESCRIPTION:

GAUGE ACCESSORIES

DRAWN BY: _____ DATE: _____ DRAWING: _____



TEST PLUGS

| CAT. NO. | NPT SIZE | BODY&CAP | PLUG CORE | LAG EXT | MAX TEMP |
|----------|----------|----------|-----------|---------|----------|
| BP25-NP | 1/4" | BRASS | NEOPRENE | — | 200F |
| BP25-NR | 1/4" | BRASS | NORDEL | — | 275F |
| BP25L-NP | 1/4" | BRASS | NEOPRENE | 1 3/4" | 200F |
| BP25L-NR | 1/4" | BRASS | NORDEL | 1 3/4" | 275F |
| BP50-NP | 1/2" | BRASS | NEOPRENE | — | 200F |
| BP50-NR | 1/2" | BRASS | NORDEL | — | 275F |

TEST PLUG ACCESSORIES

| CAT. NO. | DESCRIPTION |
|----------|--|
| GA18 | Gauge adaptor w/ 1/8" 304SS probe (probe guard included) |
| GA16 | Gauge adaptor w/1/16" 304SS probe (probe guard included) |

TEST KIT

| CAT. NO. | DESCRIPTION |
|----------|--|
| TPK | Carrying Case includes (1) TL25-030-4L (1) TL25-160-4L (1) PT220 (1) GA18 |

| QTY. | CAT. NO. | TAG |
|------|----------|-----|
| | | |
| | | |
| | | |
| | | |

CUSTOMER _____
 PROJECT _____
 ENGINEER _____
 PRO or P.O. NO. _____



WEISS INSTRUMENTS, INC.
 HOLTSVILLE, NEW YORK 11742

DESCRIPTION:

Temperature / Pressure Plugs

DRAWN BY: _____ DATE: _____ DRAWING: _____