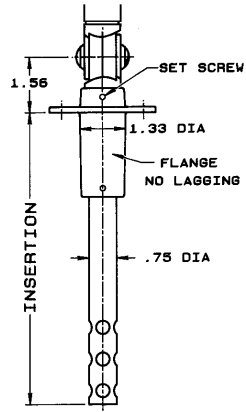


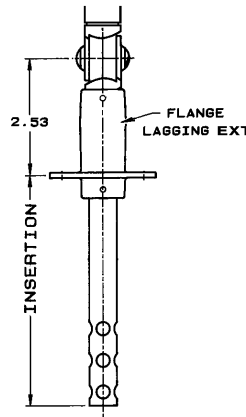
CASE: Modern V-shape design with parts molded of GE Valox® polyester in black textured finish. Heavy glass protected front firmly secured against rattles by spring action. **STEM:** Perforated Aluminum. **LOCKING DEVICE:** A hand rotatable friction lock with the angle adjusting screw work independently to provide a full 360° positioning of thermometer case and stem. **ADJUSTABLE JOINT:** GE Valox finished to match case. **ACCURACY:** Within 1% of scale range. Silicone shock mounted for lasting durability. **SCALE:** White coated aluminum with permanently baked bold black markings. **FILL:** Blue liquid.

© Valox is a registered trademark of the General Electric Co.
 © Vari-angle is a registered trademark of Weiss Instruments, Inc.

Scale Size	X
7"	9 3/4"
9"	11 3/4"



Air Duct Stem



VARI-ANGLE INDUSTRIAL THERMOMETERS					
QTY.	CAT. NO.	SCALE LGTH.	STEM LGTH	RANGE	TAG
	9VD6	9"	6"		

°F RANGES	SCALE DIVISION
40-0-110°F	2°
0-120°F	1°
0-160°F	2°
30-180°F	2°
30-240°F	2°
30-300°F	2°
50-400°F	5°
50-550°F	5°

NOTE: Dual and Centigrade Scales available.

CUSTOMER _____

PROJECT _____

ENGINEER _____

PRO or P.O. NO. _____



WEISS INSTRUMENTS, INC.
 HOLTSMILLE, NEW YORK 11742

DESCRIPTION: **Air Duct Stem**
Vari-angle® Industrial Glass Thermometer
 Full Conformance with Fed Spec. GG-T-321D

DRAWN BY: _____ DATE: _____ DRAWING: _____